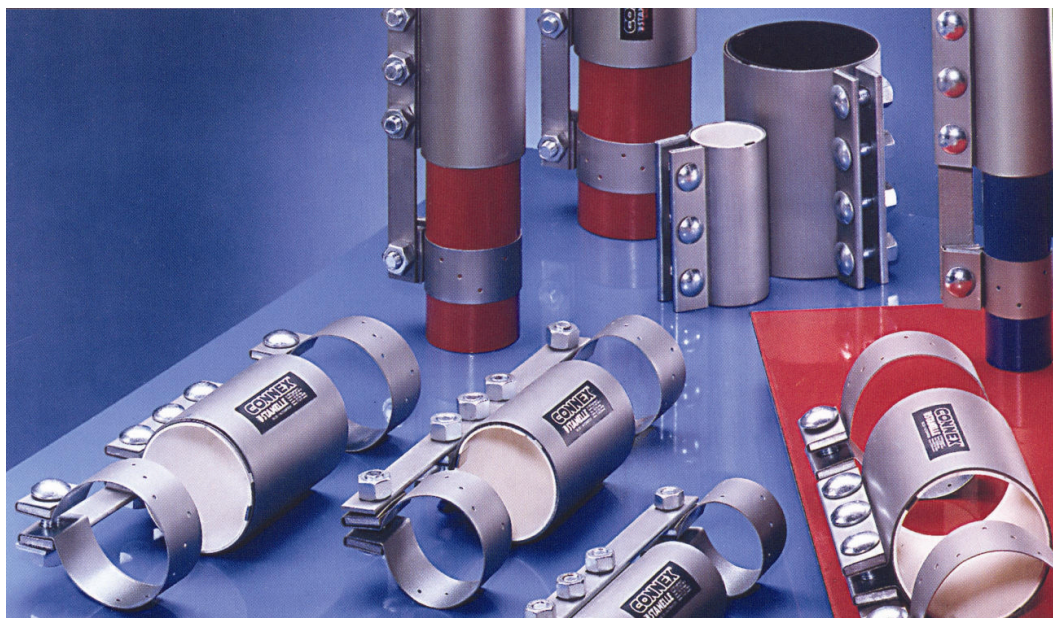


## FILLING PIPE COUPLINGS CONNEX

TO CONNECT AND SEAL PIPELINES EFFICIENTLY



### Notice



Normal couplings can be subsequently replaced with STANELLE CONNEX®-couplings

The **STANELLE-CONNEX® Pipe-Coupling System** provides the economically most favorable sealing and joining of conveyor pipelines. Pipelines for the pneumatic conveying of bulk materials are subject to heavy wear. Flanged joints, with their seals and off-centered construction, create turbulence and wear. The CONNEX® pipe couplings center the pipes offset- and vortex-free and the exterior gaskets seal the pipeline tightly. An inlaid stainless steel tape ensures potential equalization against the build-up of static electricity.

For extreme application conditions, e.g. high temperatures or heavy vibration, we provide pipe couplings with special extension arms which enforce the connection.

### Areas of Application

The conveyor pipes are centered, fitted, spot-welded and sandpapered. The interlocking gasket of the CONNEX® coupling is laid around the pipe joint and pressed together to be pressure-tight with the screwed-on outer coupling casing. The interlocking rubber gaskets, with their different specifications, guarantee enduring gas- and dust-tight joints.

### Functionality

- Perfectly fitted pipeline couplings
- Wear-reducing coupling
- Economical pipe coupling, since only spot welding is required

### Details / Design

- Outside cladding: galvanized steel
- Sealing: Neoprene-stainless steel to avoid electrostatic charge.

### Finish

**Article Number**

Outer pipe diameter in mm	CONNEX®-Coupling length in mm	Number of Screws	Article Number
38,1	100	2	702 10 007
48,3	100	2	702 10 008
50,8	100	3	702 10 009
54,0	100	2	702 10 010
60,3	150	3	702 10 003
70,0	150	3	702 10 011
76,1	150	3	702 10 012
82,5	150	3	702 10 013
88,9	150	3	702 10 014
88,9	200	4	702 10 015
95,0	150	3	702 10 016
95,0	200	4	702 10 017
101,6	150	3	702 10 018
101,6	200	4	702 10 019
108,0	150	3	702 10 020
108,0	200	4	702 10 021
114,3	150	3	702 10 022
114,3	200	4	702 10 026
127,0	150	3	702 10 023
133,0	150	3	702 10 024
133,0	200	4	702 10 025
139,7	150	3	702 10 027
152,4	150	3	702 10 28
159,0	150	3	702 10 029
168,3	150	3	702 10 030
168,3	200	4	702 10 031
193,7	150	3	702 10 034
203,2	150	3	702 10 032
219,1	200	4	702 10 057
254,0	200	4	702 10 033

**Standard: without extension**

**Additional models, sizes and materials are available on request!**

**Notice**

