

{ XE "Big Bag Befüllung" }

Mobile BIG-BAG – filling station SBB 1000 M



The mobile BIG-BAG filling station SBB 1000 M can be used wherever a BIG-BAG filling station via an existing loading system, e.g. STANELLE JET LOADER RONDO/QUADRO is present.

Application

- **Mobil:**
The filling station can be easily moved with a forklift on-site
- **Multiple use RONDO/QUADRO:**
The existing STANELLE jet loaders RONDO/QUADRO normally for open and closed truck loading can also be used for BIG-BAG loading. An adaptation to existing loading systems is also available as an option.
- **Flexible:**
Perfect height adjustment due to two trapezoidal screws enable:
a) the filling of BIG-BAG's with filling heights up 1.550 mm / optional 2.000 mm
b) the adaptation to different filling hose length depending on the BIG-BAG manufacturer
BIG-BAG's up to 1400 x 1360 mm ground size fit into our SBB 1000 M.
- **Environmentally friendly:**
The filling-dome has an aspiration outlet to connect to central dust extraction.

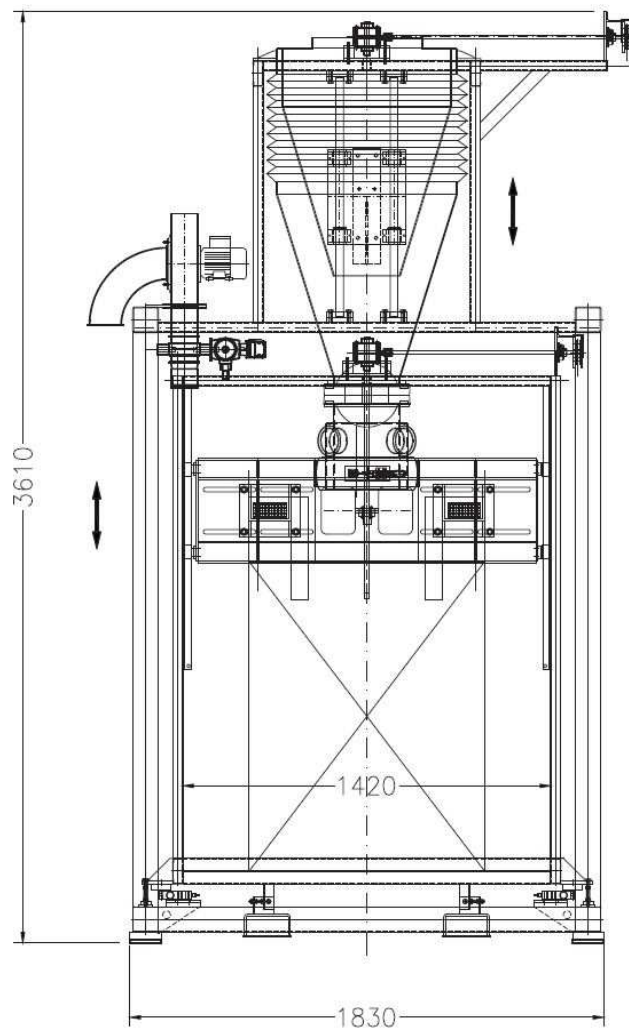
Details / design

Optionally, a version with a direct filter mounting BELFI with on-site material can be adapted.

- **Continuous loading process:**
The implemented vacuum valve ensures an unwanted contraction of BIG-BAG and / or bellow.
- **Weighing unit:**
The weighing table is completely decoupled from the previous inflatable sleeve and butterfly valve and therefore a maximum weighing accuracy can be achieved.
- **Reliability / quality:**
STANELLE quality - ruggedized by perfect-engineered durable components.
- **Option / modifications**
Our own construction department is able to do individual adaptations / changes any time.
- **Steel Material:**
 - De-rust: SA 2,5
 - primer: 2K EP; 40µm
 - finish paint: 2K-Pur-AC RAL 9006; 40µm
- **Stainless Steel :**
Glass beads blasted

Details / Design

Finish



Technical Data

Frame: profil tube 100 mm x 100 mm with forklift shoes
 Filling connection: designed for JET-LOADER type QUADRO
 Vacuum valve: for ventilating the BIG-BAG station
 Vent Pipe: DN 100 with cover

Bellows: to compensate the height adjustment

Suspension: adjustment for BIG-BAG in height
 Connection device: for BIG-BAG with bulking and counter-cuff
 BIG-BAG height adjustment: manual rack winch
 Neck size inflatable sleeve: Ø 350 mm
 Butterfly valve (Loading): NW 250 electro pneumatic operated
 Weighing platform: suitable for pallet size 1200 mm x 1200 mm

BIG-BAG

BIG-BAG size: to Max. B X T max. 1200 mm x 1200 mm
 BIG-BAG height: without loops 1500 mm / optional 2000 mm
 BIG-BAG weight: max. 2000 kg
 BIG-BAG loop length: 330 - 350 mm (recommendation)
 Length of filling nozzle: mind. 350mm
 Size of filling nozzle: Ø 350 mm
 Transport: with pallet and a forklift
 Alternative: with a forklift and BIG-BAG loops

Load cells: 4 x 1.000 kg
 Weighing terminal: power supply 24VDC
 4 digital inputs and outputs
 RS-485 interface
 temperature range -20°C up to +50°C

Air blower: perfect filling of inliner BIG-BAG´s
 power supply air blower
 400V/50 Hz, 0,37 kW

Control unit: standard control unit for inflatable sleeve, weighing
 terminal, air blower and potential free contacts
 400VAC/16A

Optional: filling sensor for BIG-BAG

Article number

BIG-BAG FILLING STATION SBB 1000 M	
	Article number
Design normal steel S235JR Mobile BIG-BAG filling station incl. control, weighing system, blow up clamp, butterfly valve, air blower	756 10 001
Product contact parts in stainless steel Mobile BIG-BAG filling station ATEX Zone 21, filling sensor, blow up clamp, butterfly valve	756 10 002